

S.W. 1/4  
SECTION 23, T.6N., R.1E., S.L.B. & M.

HUNTSVILLE DISTRICT

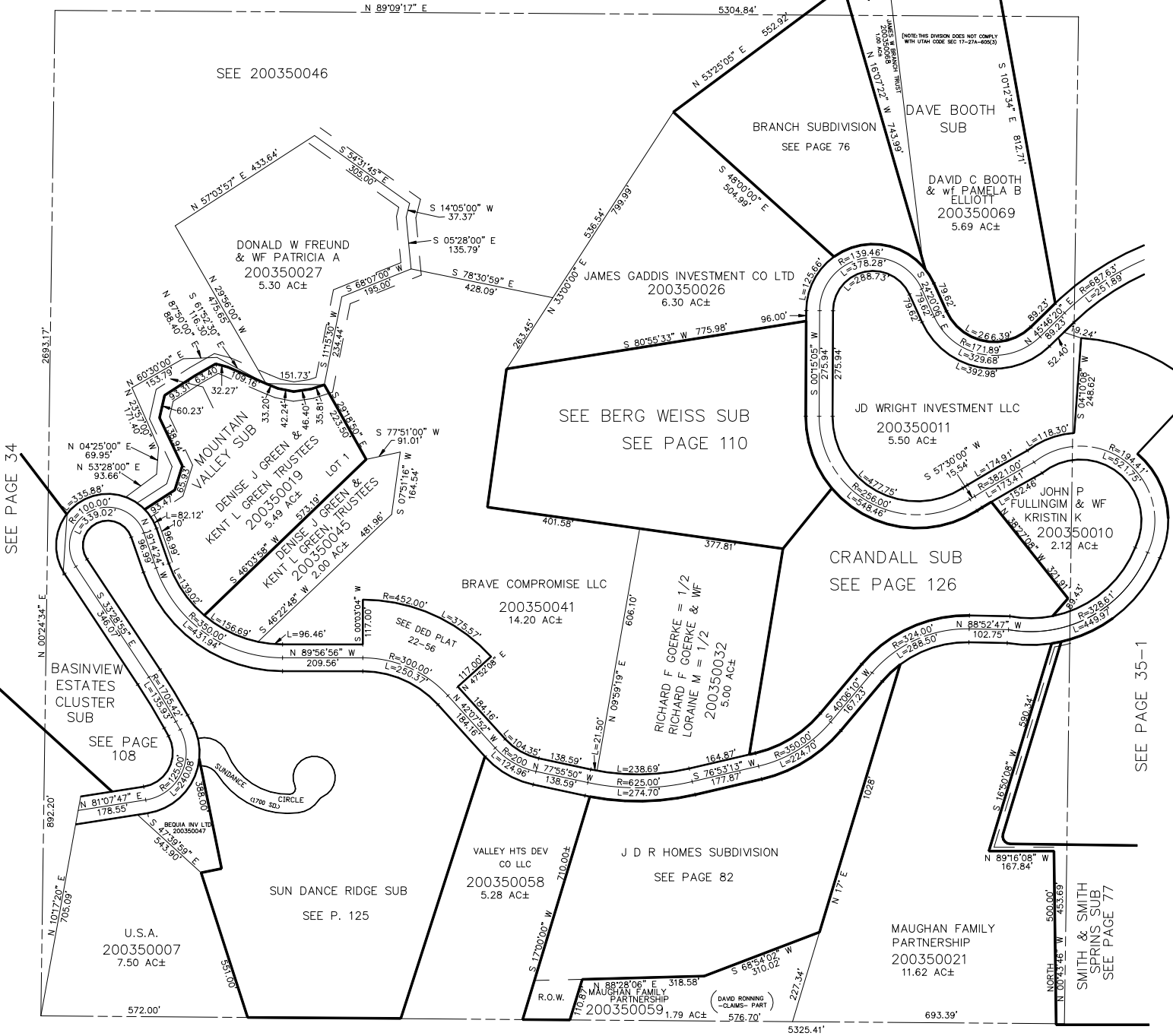
SCALE 1" = 200'

SEE PAGE 35

TAXING UNIT: 318

(NOTE THIS DIVISION DOES NOT COMPLY WITH UTAH CODE SEC 17-27A-609(3))

(NOTE THIS DIVISION DOES NOT COMPLY WITH UTAH CODE SEC 17-27A-609(3))



SEE 200350046

BRANCH SUBDIVISION  
SEE PAGE 76

DAVE BOOTH SUB  
DAVID C BOOTH & WF PAMELA B ELLIOTT  
200350069  
5.69 AC±

DONALD W FREUND & WF PATRICIA A  
200350027  
5.30 AC±

JAMES GADDIS INVESTMENT CO LTD  
200350026  
6.30 AC±

SEE BERG WEISS SUB  
SEE PAGE 110

JD WRIGHT INVESTMENT LLC  
200350011  
5.50 AC±

MOUNTAIN VALLEY SUB  
DENISE J GREEN & TRUSTEES  
200350019  
5.49 AC±  
KENT L GREEN & TRUSTEES  
200350045  
2.00 AC±

CRANDALL SUB  
SEE PAGE 126

JOHN P & WF FULLINGIM KRISTIN K  
200350010  
2.12 AC±

BRAVE COMPROMISE LLC  
200350041  
14.20 AC±

RICHARD F GOERKE = 1/2  
RICHARD F GOERKE & WF LORRAINE M = 1/2  
200350032  
3.00 AC±

BASINVIEW ESTATES CLUSTER SUB  
SEE PAGE 108

SEE DED PLAT 22-56

VALLEY HTS DEV CO LLC  
200350058  
5.28 AC±

J D R HOMES SUBDIVISION  
SEE PAGE 82

SUN DANCE RIDGE SUB  
SEE P. 125

MAUGHAN FAMILY PARTNERSHIP  
200350021  
11.62 AC±

U.S.A.  
200350007  
7.50 AC±

MAUGHAN FAMILY PARTNERSHIP  
200350059  
1.79 AC±

SMITH & SMITH SPRINGS SUB  
SEE PAGE 77

SEE PAGE 40